

Flip Top Tool Stand



This video is about how I modified my flip top tool stand to reduce the height. The original build was based on ideas I got here on YouTube.

Links:

Art Mulder Flip Top Tool Stand

https://www.youtube.com/watch?v=8U1Cm_NdJf0

Gary Lundgren Crafts

www.GLCrafts.com

Gary Lundgren Crafts

Johnstown PA

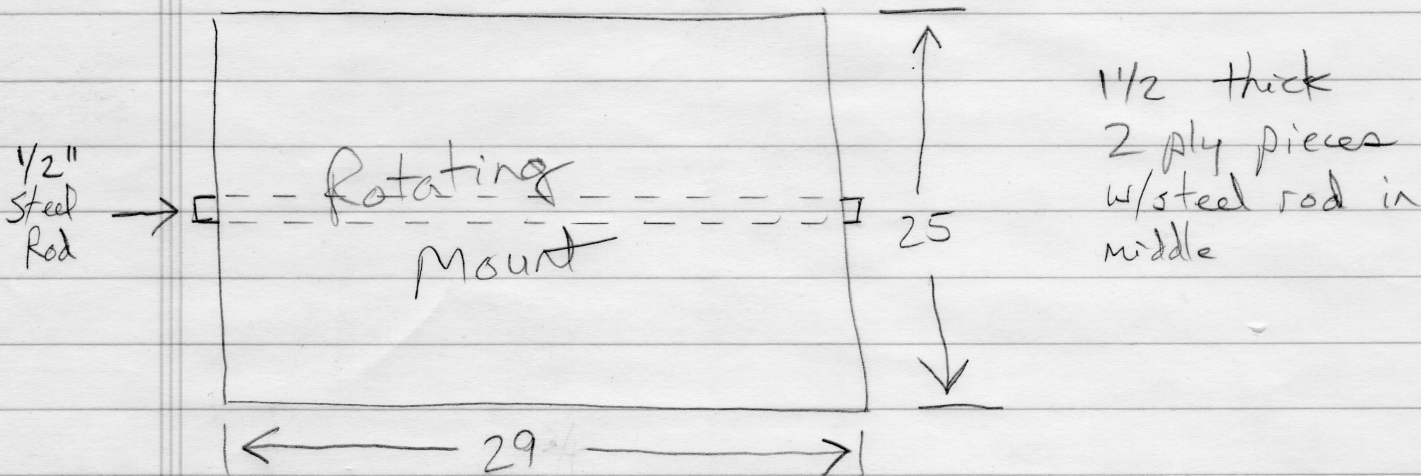
814-410-2900

www.GLCrafts.com

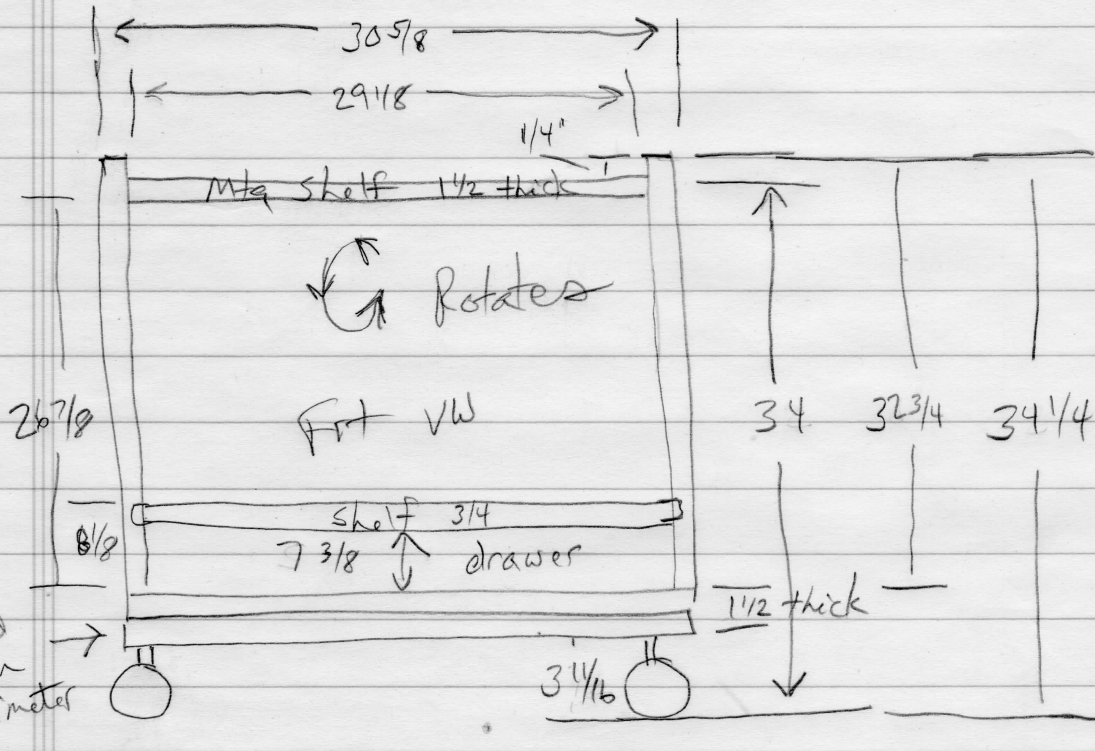
Copyright © 2016 Gary W Lundgren All rights reserved.

Flip Top Tool Stand

Planer & Ridgid Sander

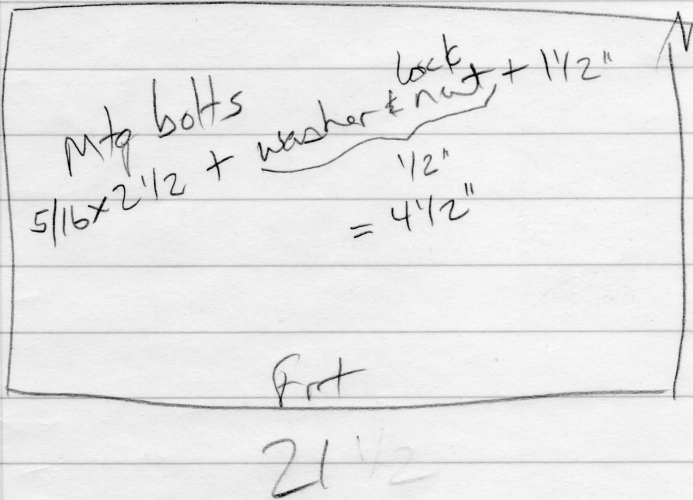


1 1/2 thick
2 ply pieces
w/ steel rod in
middle



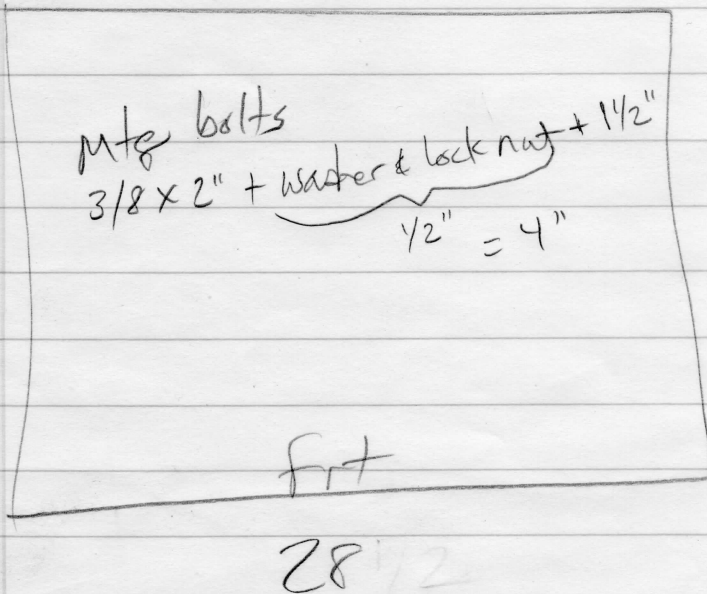
Ridgid Sander

Tool Dimensions



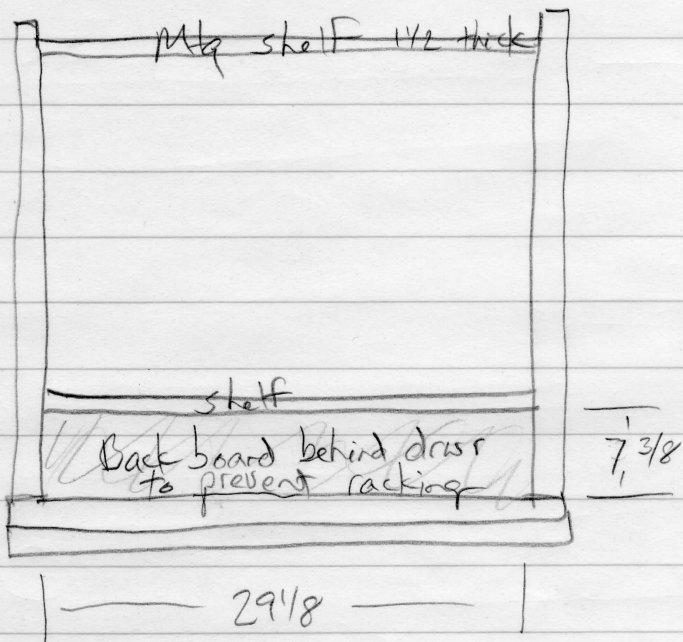
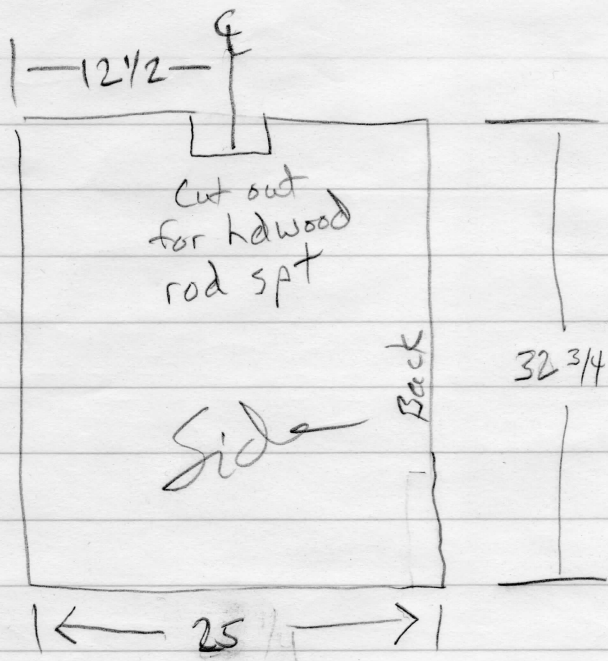
17 1/2 ht 18 1/2

DeWalt Planer



25

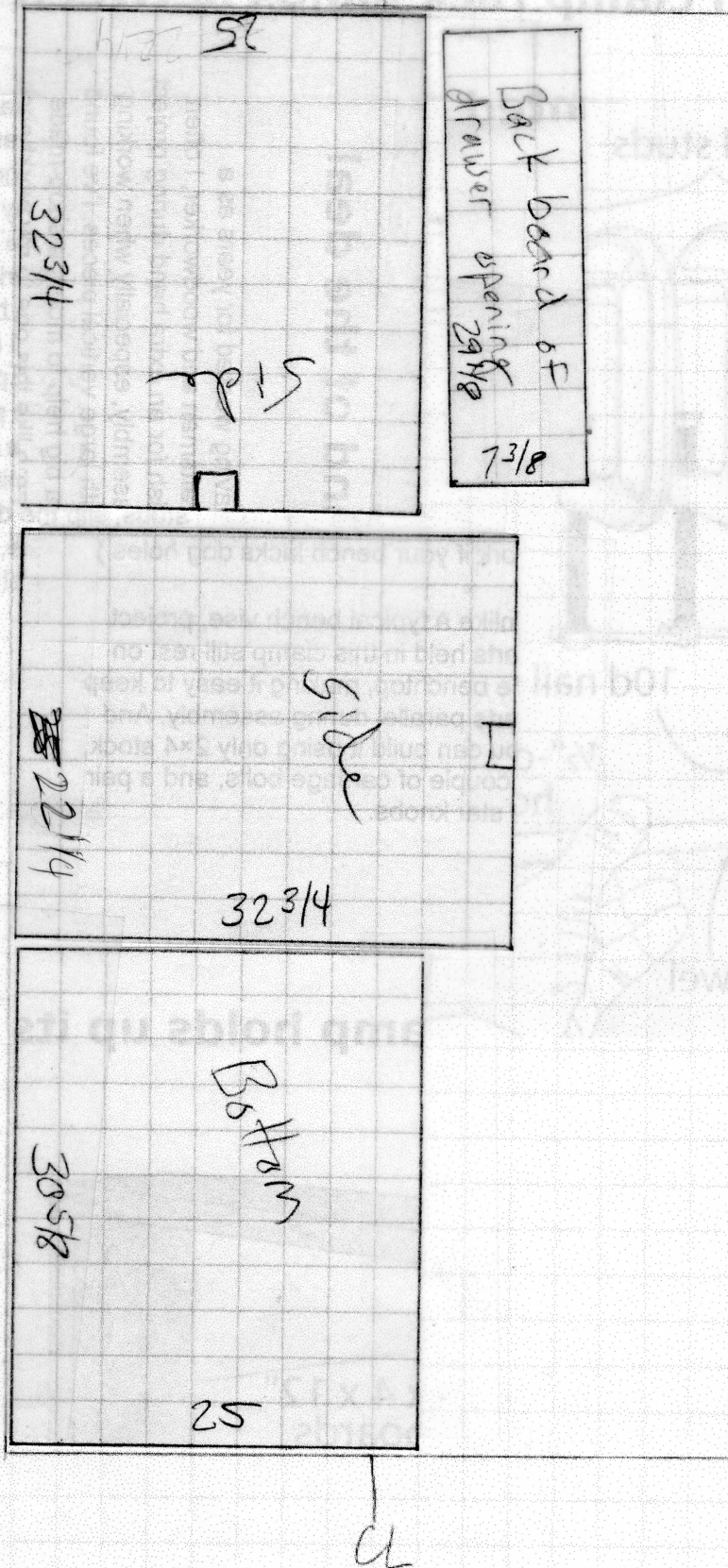
5/16 x 2 1/2 + 1/2
3/8 x 2" + 1/2 = 4"



4x8 Plyw

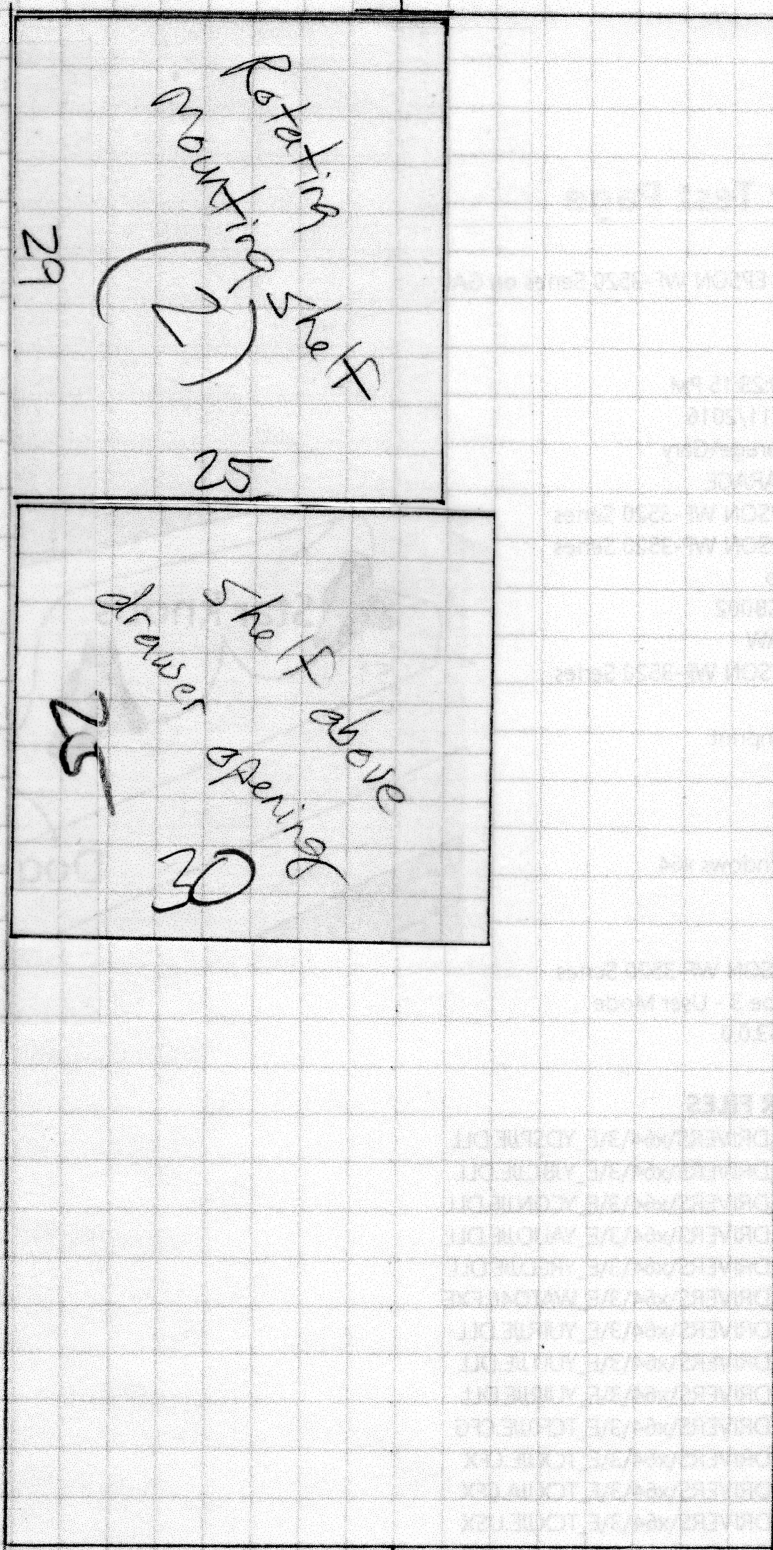
CL

□ = 3"



4x8 Plyw

□ = 3"



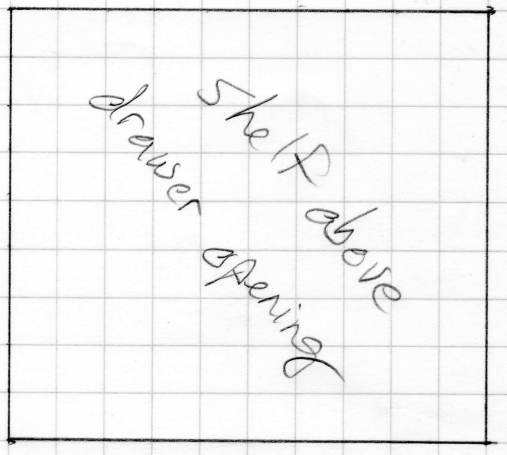
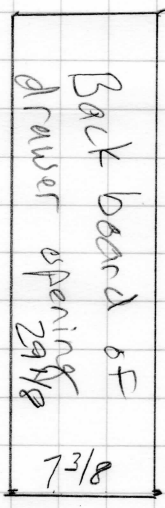
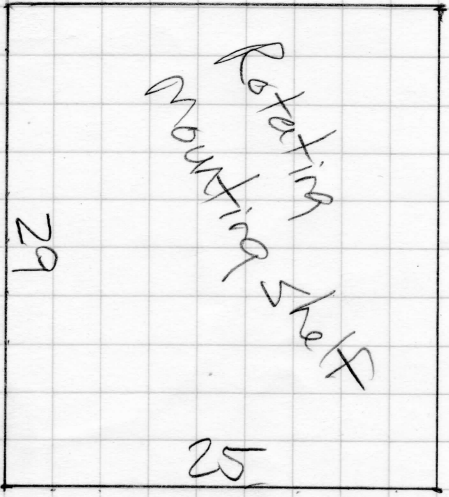
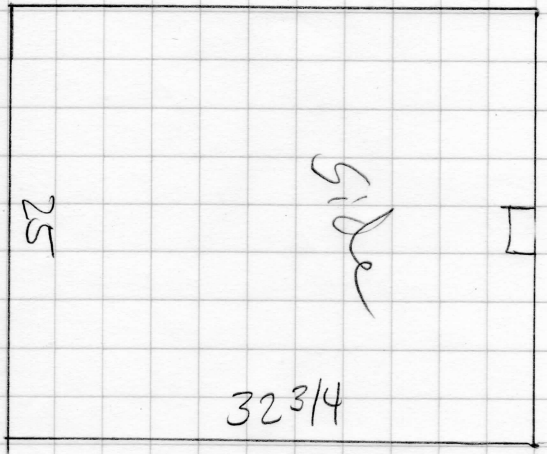
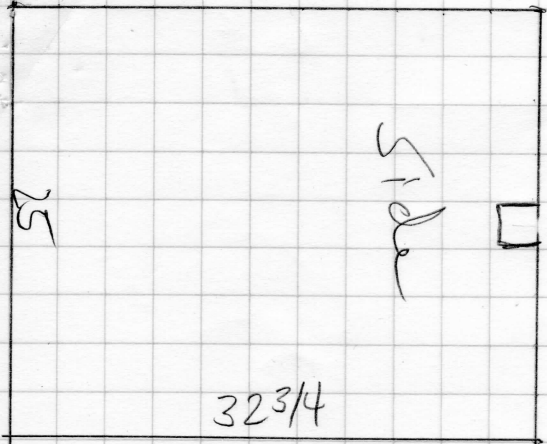
Rotating
Mounting Shelf
29
25
CL

Shelf above
drawer opening
25
30
CL

CL

CL

CL



□ = 3"